

Mobile flooring plants

CIFA EASYFLOOR

by  BLEND



A single solution for flooring

Pumping unit in two versions



Easyfloor is a mobile plant for the production and pumping of:

SCREED dry and semi-dry	MULCH (A70)
SELF-LEVELING	SOIL
SPRITZ dry and wet	GRAVEL
DRAINING CONCRETE	SAND
	EXPANDED CLAY


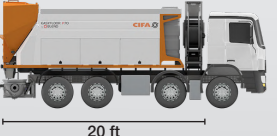
Compact and rugged automotive design:

- Real-Time Embedded operating system
- Power supply voltage: 9 .. 32 Vdc
- Operating temperature: -30 .. +75 ° C
- Protection class: IP67
- Overcurrent protection
- Ready for WiFi, LTE and GPS




Integration MYBLEND system for :

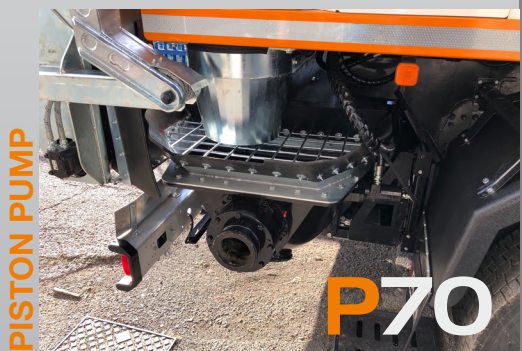
- MONITORING SYSTEM
- REMOTE ASSISTANCE


TECHNICAL DATA	A70	P70
	 20 ft	 20 ft
Total required power	75 Kw PTO	85 Kw PTO
Pumping	4 ÷ 10 yd3/h	6.5 ÷ 40 yd3/h
Max pressure	6 bar	70 bar
Cycle per minute	-	30
Conc. cylinders (diam. x stroke)	-	0.5x2.1 ft
Aggregates	~18 yd3	~18 yd3
Cement	4.5 yd3	4.5 yd3
Water	530 gal	530 gal
Additive	2x11 gal	2x11 gal
Tube winder	197 ft	165 ft
Pumping height*	328 ft	246 ft
Pumping distance*	590 ft	492 ft
Equipment weight	~9 500 lb	~10 580 lb
Dimensions	20 x 7.4 x 7.5 ft	20 x 7.4 x 7.5 ft
Max grain size	0.5 inch	1 inch
Consistency	dry, semi-dry, wet	Plastic, self-leveling

* Indicative data, subject to variations.



Material Type	Grain size
Screed	0.5 inch max
Wet soil	
Self-leveling screed	



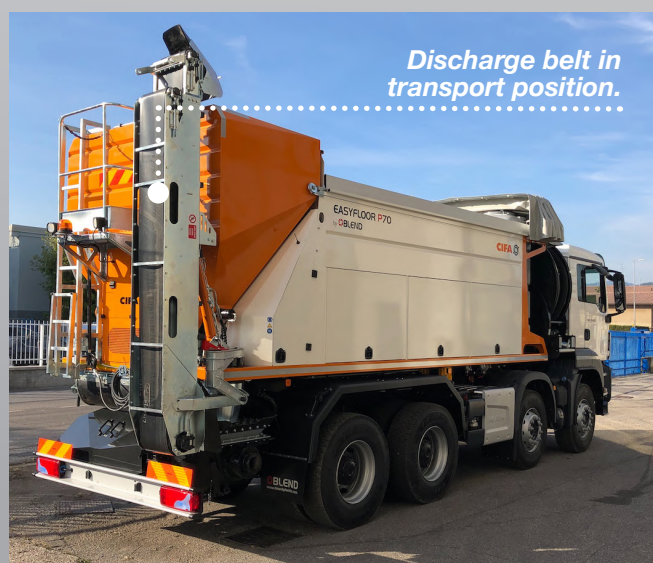
Material Type	Grain size
Concrete	1 inch max
Self-leveling screed	





A70 in transport position.

Tube winder.



Discharge belt in transport position.



Discharge belt in working position (telescopic).



ITALY
Via Castegnato, 19 - 25050
Rodengo Saiano - Brescia
+39 0307689730
info@blendplants.com
www.blendplants.com

USA
8757 NW 35th. Lane
Doral, FL 33172, USA
Office 1-866-2536387
866-Blend US
salesam@blendplants.com



ITALY
Via Stai Uniti d'America, 26 - 20030
Senago - Milano
+39 02990131
sales@cifa.com
www.cifa.com